



# TAMPA TREASURES

# Embracing Nature: A Modern Charm in Tampa

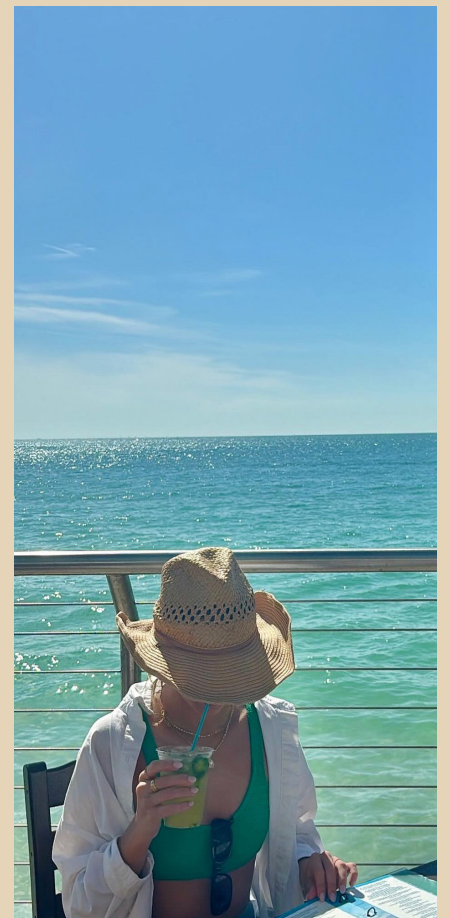
In the heart of Tampa, amidst the vibrant cityscape, lies a style that seamlessly blends modern elegance with the charm of nature's beauty. Meet [Your Name], whose aesthetic is a delightful fusion of sophistication and character, drawing inspiration from the serene landscapes of both the Mediterranean and the tropical paradises.

At the core of Marisa's aesthetic lies a deep appreciation for nature's hues. The deep blues reminiscent

of the Mediterranean sea, paired with crisp whites and earthy tones, create a timeless and inviting ambiance. The soft tropical colors, reminiscent of Hawaii's lush landscapes, infuse warmth and vibrancy into every aspect of Marisa's style.

In Marisa's spaces and outfits, the mantra is simple yet profound: stick to the basics and timeless pieces as a foundation, then infuse them with personalized touches. This approach allows for versatility and

longevity while adding unique character and charm. Accessories play a pivotal role, serving as the canvas for self-expression and individuality.



As a resident of Tampa, Marisa finds inspiration in the city's tropical allure. The pristine beaches, such as Clearwater Beach with its soft, white sands and crystal-clear blue waters,





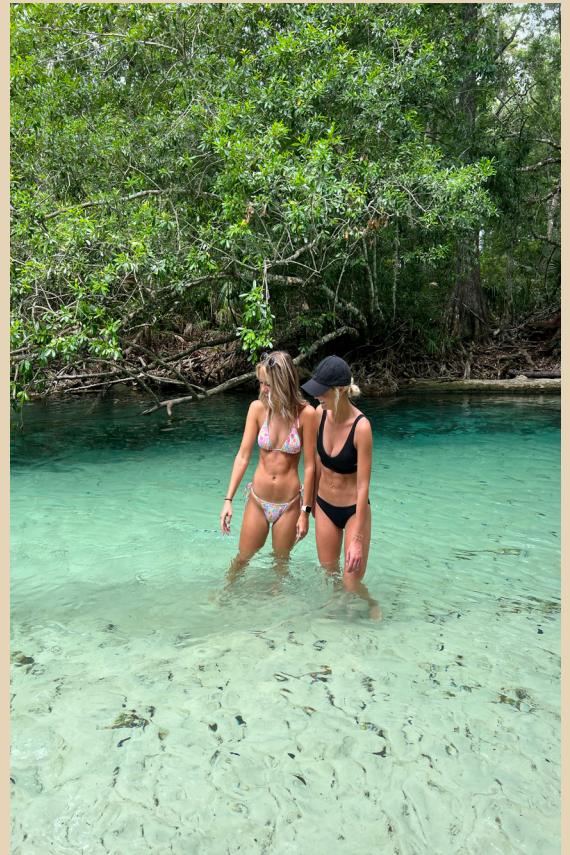
mirror the serene beauty of Marisa’s aesthetic. The fusion of European elegance and tropical vibrancy reflects Tampa’s diverse culture and dynamic environment.

In the bustling streets of Tampa, Marisa’s aesthetic stands out as a modern oasis infused with character, charm, and the timeless allure of nature. It’s a style that not only captures the essence of its surroundings but also invites others to embrace their own unique blend of sophistication and spunk.

As Marisa continues to evolve and refine their aesthetic, one thing remains constant—the harmonious balance between modern elegance and the timeless beauty of nature.

In the heart of Tampa, amidst the vibrant cityscape, lies a style that seamlessly blends modern elegance with the charm of nature’s beauty. Meet Marisa, whose aesthetic is a delightful fusion of sophistication and character, drawing inspiration from the serene landscapes of both the Mediterranean and the tropical paradises. The perfect combo. The deep blues reminiscent of the Mediterranean sea, paired with crisp whites and earthy tones, create a timeless and inviting ambiance. The soft tropical colors, reminiscent of Hawaii’s lush landscapes, in-

fuse warmth and vibrancy into every aspect of Marisa’s style. Tampa is the best of both worlds with its combination of aesthetics it provides.



A woman with blonde hair, wearing a white sleeveless dress and a light-colored hat, is walking barefoot on a sandy beach. She is smiling and holding a drink in her right hand. The ocean is in the background with gentle waves. The sky is a clear, pale blue.

**Live Life**

**in**

**TAMPA**