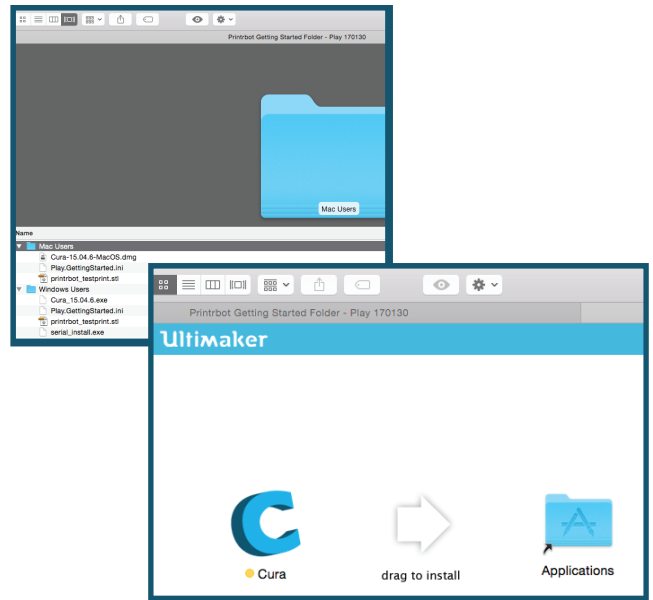


Printrbot Play

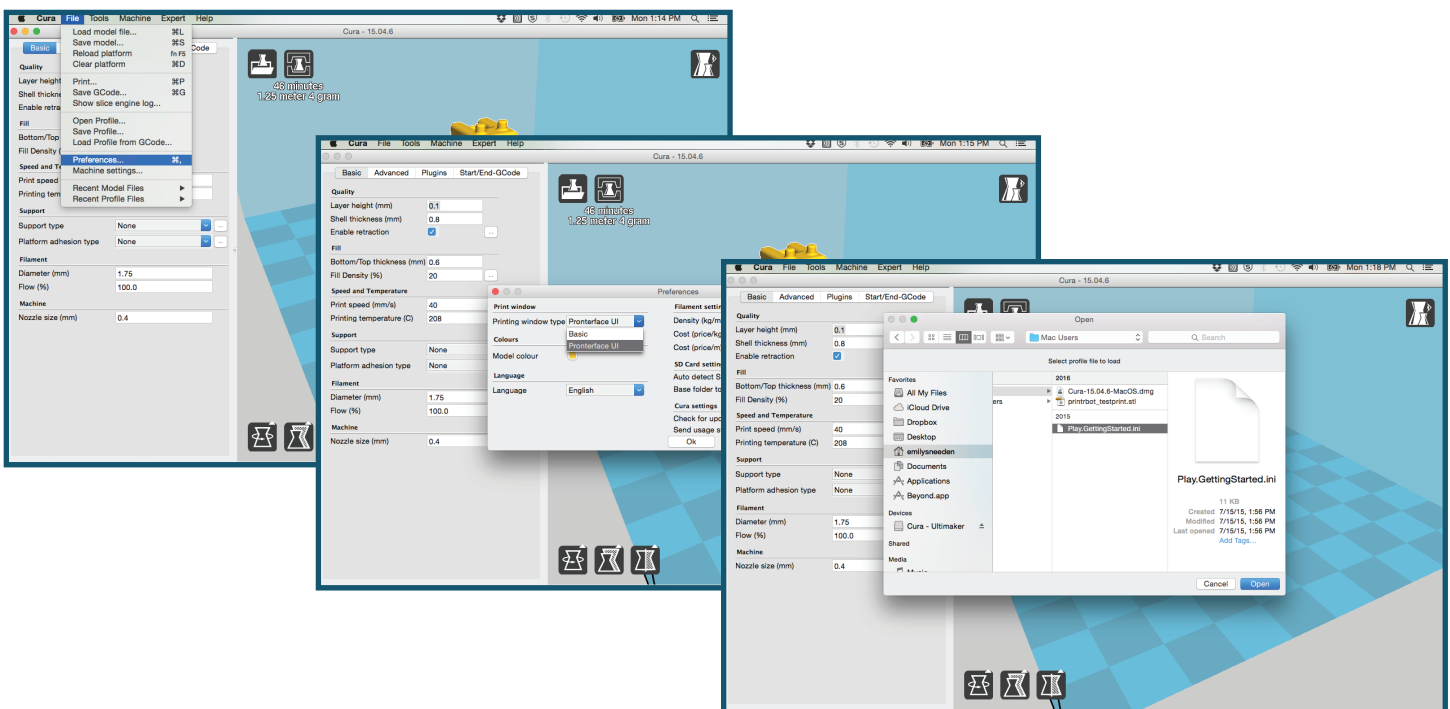
Install and Prepare Software (Mac)

1. Download the .zip file from the Printrbot website
2. Extract the files
3. Open the "Mac Users" folder and double-click to open the Cura.dmg
4. Drag the Cura app to the "Applications" folder



Note: In System Preferences, you may need to change "Security and Privacy" settings to allow apps downloaded from anywhere and "Energy Saver" settings sleep time to "Never" (If the display sleeps, the 3D printer will stop abruptly)

5. Open the Cura app
6. a) Select your language and click "Next" b) Select your machine "Printrbot" and click "Next" c) Select your Printrbot machine "Play" and click "Next"
7. Once the Cura interface is open, select File>Preferences, change the printing window type to "Pronterface UI", and click "OK" to apply
8. Finally, select File>Open Profile..., select "Play.GettingStarted.ini" from your "Mac Users" folder, and check that the Layer height (mm) is 0.2064

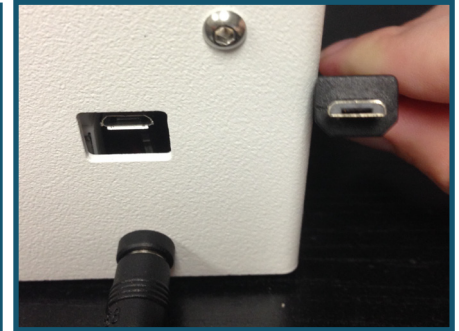
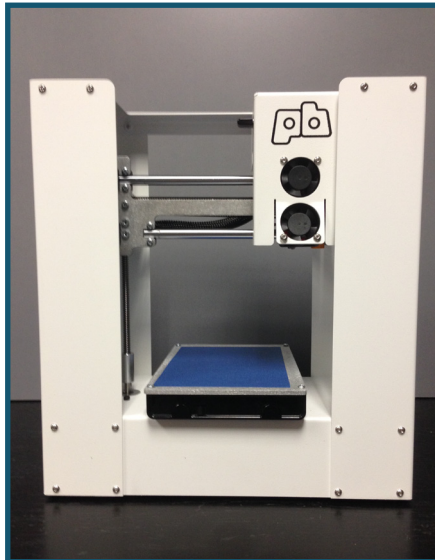


Printrbot Play

Connecting and Preparing Printrbot Play

1. Add blue paint tape to printer bed
2. Plug the 3-prong plug to a power outlet (3-prong socket) and connect the power cable adapter to the socket on the 3D printer marked "POWER"
3. Gently plug the USB to your computer and the micro USB to the socket on the 3D printer marked "Micro USB"

Note: *Tape should be replaced every 3-7 prints*

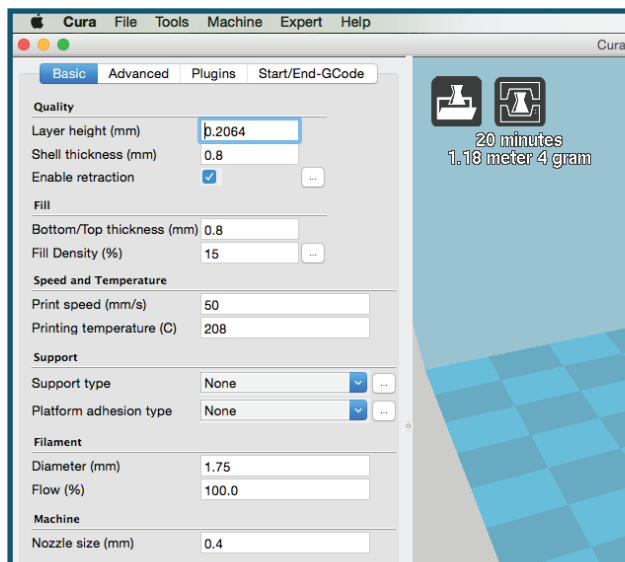


Note: *Your 3D printer will not turn on or do anything until you load the software*

Caution: *Improper connection and removal will permanently damage your Printrbot*

Loading and Preparing Print

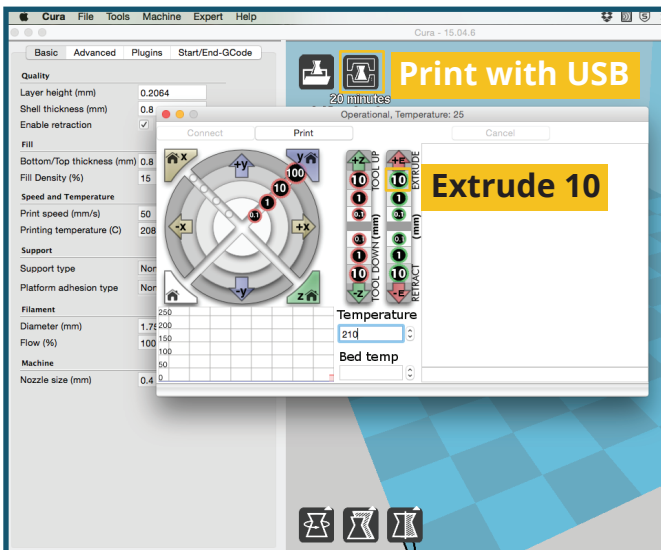
1. In the Cura app, right-click and delete any model, then select File>Load Model File, and load your .stl file
2. Resize and rotate your model until the flattest part is on the build plate, the model fits the environment, and the print time is acceptable
3. If the model is not completely flat on the bottom, select Platform adhesion type>Raft in the Basic menu



Note: *If the model is yellow, that means it will fit on the printer bed; if the model is gray, that means it's partially off the bed or it is too large to be printed*

Printrbot Play

Loading Filament and Printing Model

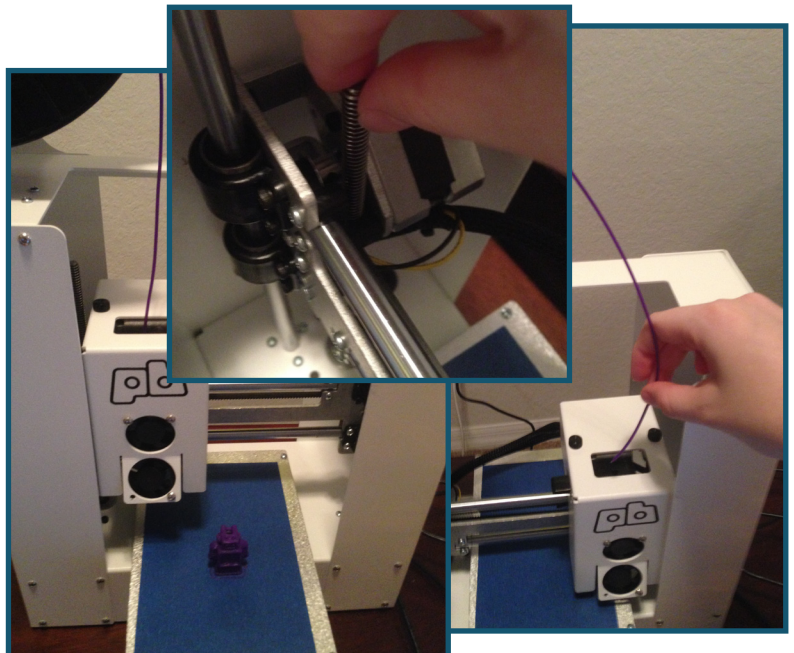


1. Click the “Print with USB” icon to open the printer interface, which will display if the printer is connected and the driver was successfully installed
2. Once the graph is open, change the temperature by typing 210 °C; if it flatlines, press the up arrow once to reactivate
3. Load filament spool on spool rack
4. Insert end of filament in the hole at the top of fan shroud
5. While loading, press down the black lever on the side of the printer head to load the filament further

WARNING: NEVER TOUCH PRINTER HEAD DIRECTLY, EXTREMELY HOT!

6. Twist the threaded rod (Z axis) counter clockwise until the printer head is near the print bed
7. Once the filament is loaded, click “Extrude 10” continuously every 5 seconds until you are certain the filament is pulling smoothly
8. Carefully remove excess filament from print bed
9. Press the “print” button to get started and let the printer calibrate

Note: Once you press print, the sensor will align itself to the four corners and then start printing



10. Once your print is done, click the “Retract 10” button on the graphic interface as many times as it takes (at 5 second intervals) until the filament is extrudable
11. Gently unplug all cables and wait for printer to completely cool before touching

CAUTION: Do not leave your 3D printer running unattended